

Antenna (51A/51AA) Installation Guide



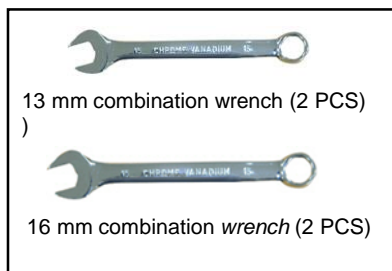
Issue: 02

NOTE

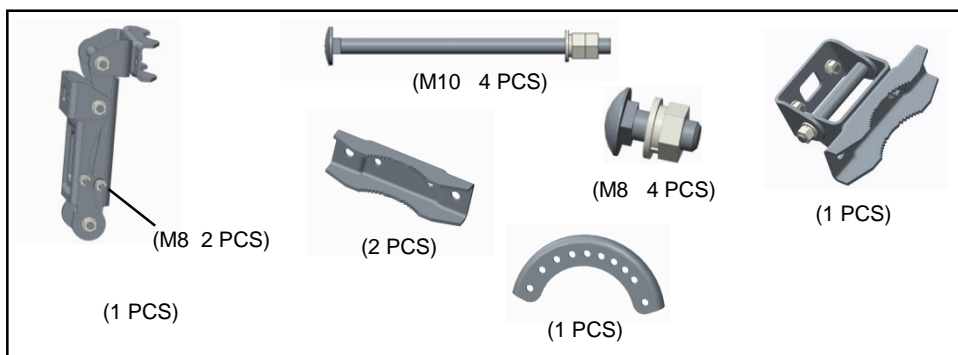
1, Only qualified personnel are allowed to install the antenna.

2, Appearance of the actual antenna may differ from the pictures.

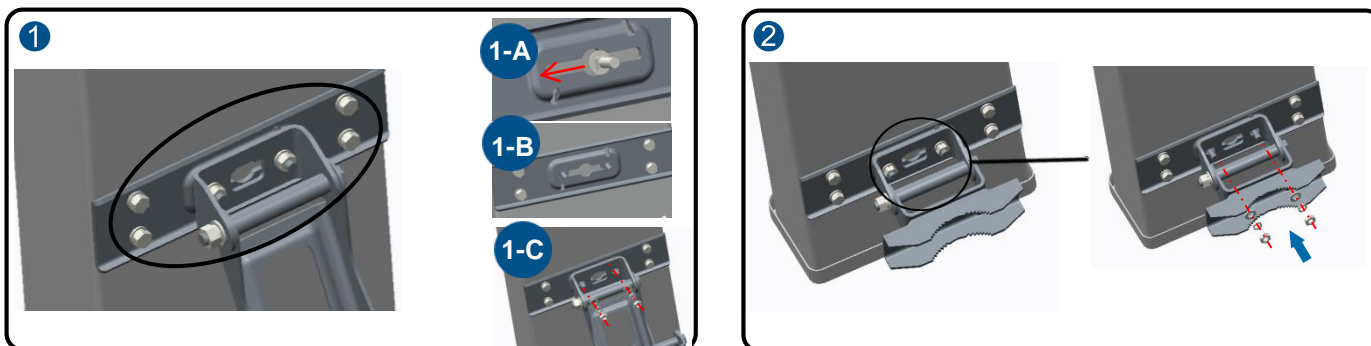
Installation tools



Bracket Subassembly

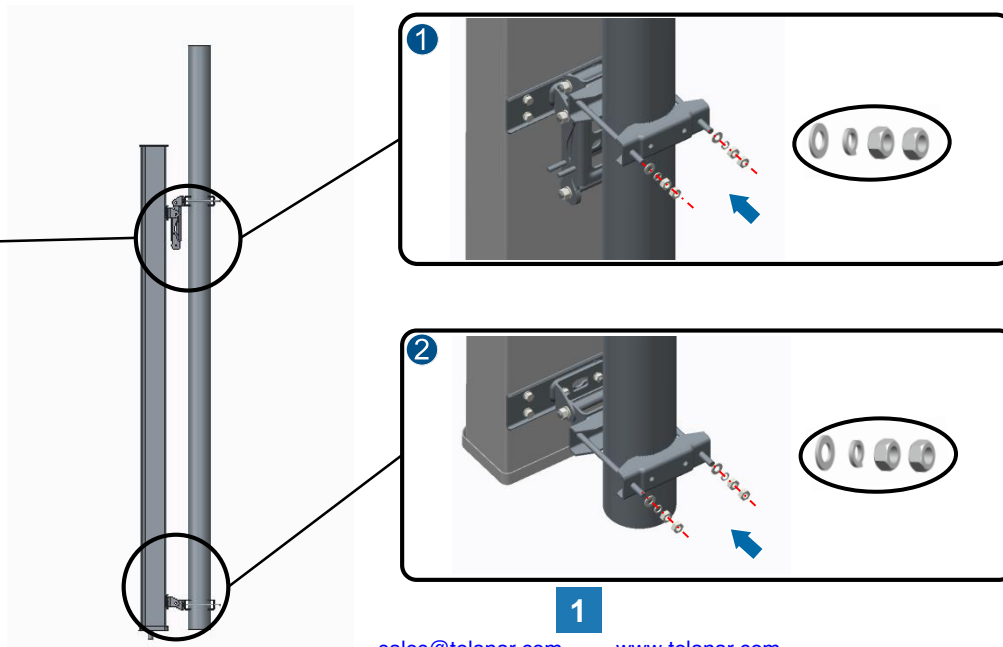


1 Install the bracket



2 Install the antenna

Ensure the upper bracket is fully closed before the bolts are screwed tightly



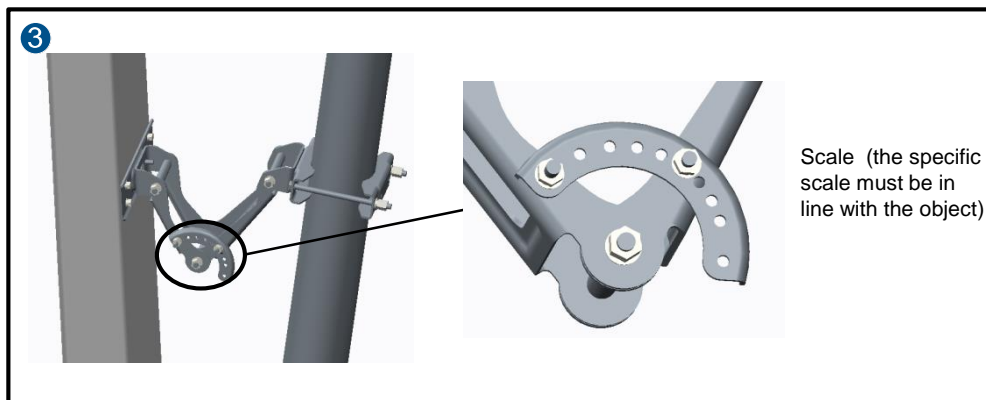
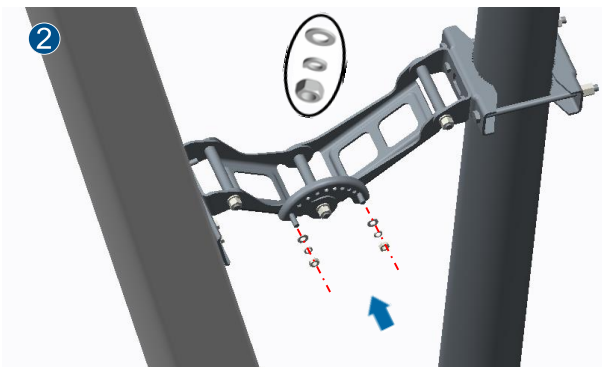
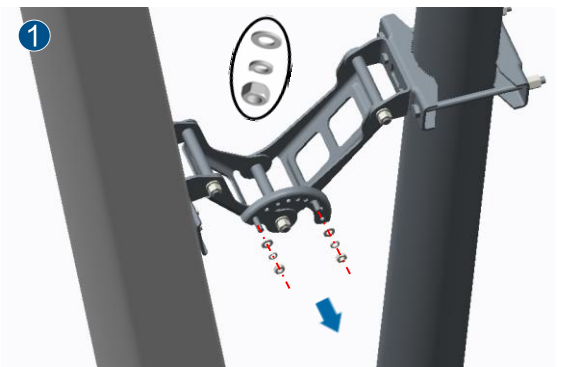
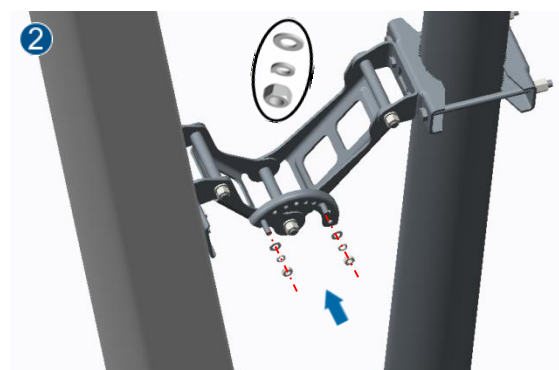
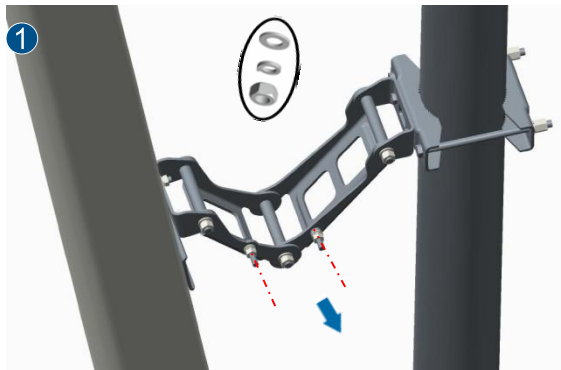
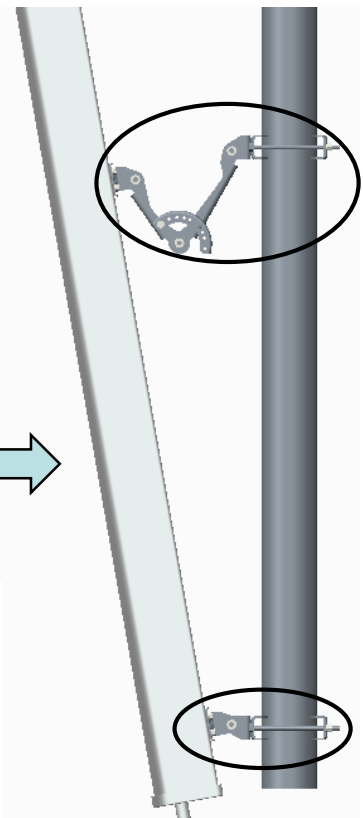


Table 1

Finally, tighten all the nuts.
Recommended torque see
Table 1.

Screws size	Torque
M8	18 Nm
M10	32 Nm

**Note:**

Make sure the antenna is installed in a safe and suitable location and well clear away from high power lines
Do not attempt to carry out installation when it is raining, snowing or during stormy weather
Do not attempt to install the antenna on a pole of diameter other than the specified 50~115mm